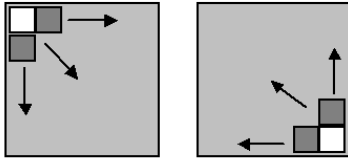


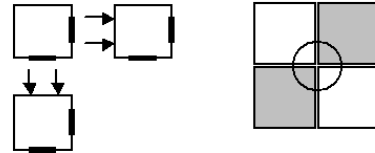
INSTALLATION GUIDE DO-IT-YOURSELF!

Before starting the installation, spread the tiles throughout the room for a minimum of 24 hours to acclimatize to room before installing. This will ensure that the tiles are at their optimum size, as rubber will expand and contract with temperature and humidity changes.

1. You can start in any place at the room. Please leave a small space between the wall and the tiles (aprox. 1 cm -- 1/2 inch).



2. Keep the interlocking tiles always facing the same direction. Make sure the tiles' corners fit in a perfect square



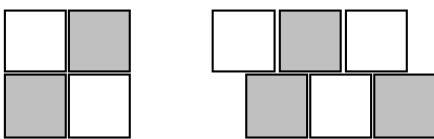
3. Make sure the tiles are tight together. You can use a rubber hammer to adjust the sides of the tiles.



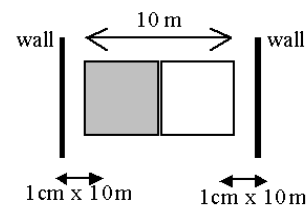
4. We recommend to begin the installation at a corner and continue following this order.

1	2	4	7
3	5	8	11
6	9	12	14
10	13	15	16

5. KINELE tiles can be installed in the two positions showed below.



6. When cutting the tiles with a stanley knife or a jig saw, measure the tile at 2 separate points. Please remember to leave a small space between the wall and the tiles (aprox. 1 cm -- 1/2 inch)



NOTES:

As wood, PVC is a material that dilatates during the summer and contracts during the winter, with a dilatation coefficient of 0,00015 mm/°C.

Rubber will expand and contract with temperature and humidity changes and a mat laid in the morning hours at 0° would be a different size than a mat laid at 20°C later in the day.